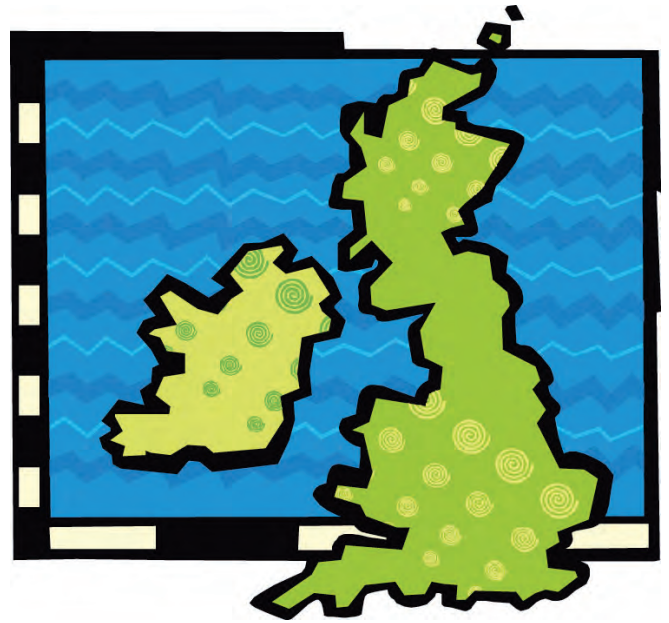


Great Britain

Read the text carefully and answer the questions below:

Great Britain is situated in the north west of Europe. It is made up of 4 parts, **England, Scotland, Northern Ireland and Wales**. The Thames river flows through the heart of the capital, **London**. The **red double-decker buses**



which can be seen in London are very famous. The London police officers (nicknamed **Bobbys**) are also well-known. Britons really enjoy a nice cup of tea. One of London's most famous sites is the **Queen's** residence, **Buckingham Palace**. If the Union Jack can be seen waving by the palace this means that the Queen is at home.

Which 4 parts make up Great Britain?

England, Scotland, Northern Ireland, Wales

The capital of Great Britain is London

What is a London policeman also known as?

Rooby

Bobby

Cops

What do Britons like drinking?

coffee

water

tea

Where does the Queen live? Buckingham Palace

What colour do many of London's buses have? red

Draw the Union Jack:

